

# siegmund

WELDING TABLES AND CLAMPING SYSTEMS



## WELDING TABLES

Benefit from a variety of clamping options and maximum flexibility.

**Bernd Siegmund GmbH**  
(Bavaria / Germany)

For many years the Siegmund Group has been successfully designing, producing and distributing welding and clamping table systems worldwide and are now revered as the world's number one. From new facilities in Oberottmarshausen and Skawina, the Siegmund Group now has over 70,000 square meters of production and warehousing space.

Delivery lead times are minimised with 18,000 square meters of storage at our Oberottmarshausen headquarters.



Oberottmarshausen (D)

**All Siegmund products in detail**

Detailed information on our products as well as other product versions and our entire product range can be found online at [www.siegmund.com](http://www.siegmund.com).



[www.siegmund.com](http://www.siegmund.com)



Find the latest news about Siegmund on our social media pages.

**Siegmund's unique and specially developed materials and processes, provide features not generally offered by other producers.**



### Quality

- Product innovations, high-quality materials, accurate processing
- On-going product development from field experience and customer feedback



### Surface-hardened accessories

- Improved protection against corrosion
- Improved protection against scratches
- Improved protection against welding spatters



### Hardest welding tables

- Extraordinary hardness due to specially developed alloys for Professional Extreme welding tables
- More corrosion resistance and extended wear free life with plasma nitration
- Significantly less adhesion of welding spatters
- Retention of surface flatness with Professional Extreme 8.7 and 8.8 versions even after years of heavy use



### Innovative modular system

- Modular, compatible, flexible, individual – a welding and clamping system designed to suit all your applications
- Special solutions according to customer requirements



**siegmund**





# Materials

The right working basis for every application

**>>>** The materials used are fundamental to the high level of hardness and long service life.

## Steel S355J2+N (without Plasma nitration)



## Steel S355J2+N + Plasma nitration



## Tool Steel X8.7 + Plasma nitration



## Tool Steel X8.8 + Plasma nitration



## Materials by comparison

The choice of a Siegmund table is a long term saving thanks to the high level of precision engineering and the consistent superior quality.

With our evaluation, we would like to make it easier for you to compare the different materials and to support you in selecting the right welding table.

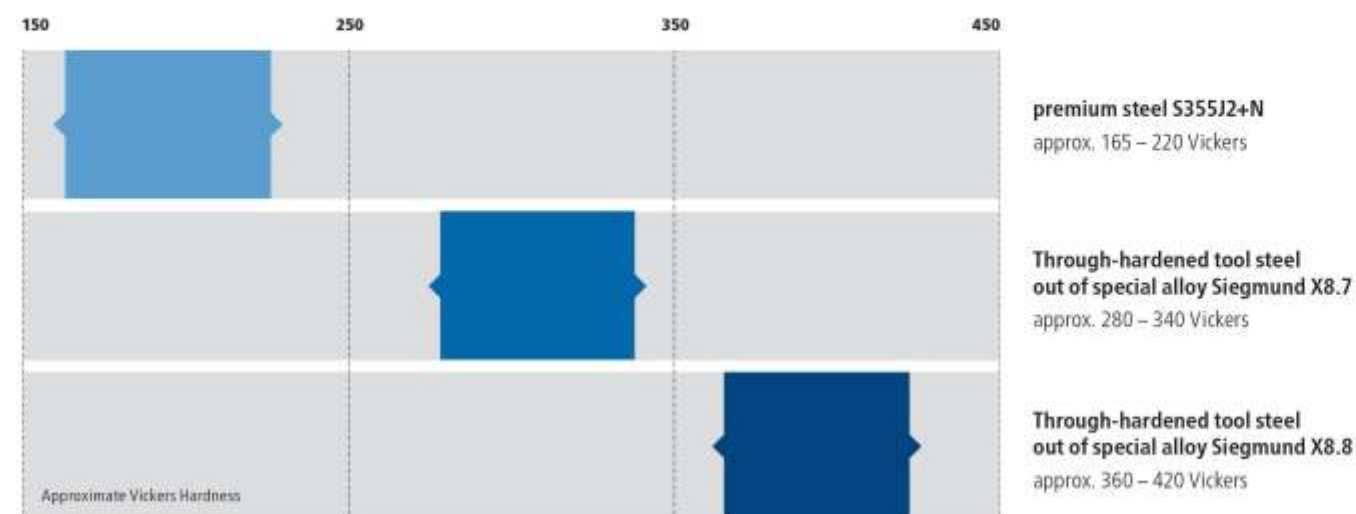
★ Shows the improvement of the properties in the last few years.

Basic hardness	★★	★★	★★★★★★	★★★★★★★
Surface hardness	★★	★★★★★★	★★★★★★★	★★★★★★★
Impact-proof	★★	★★★	★★★★★★	★★★★★★★
Scratch-proof	★★	★★★★	★★★★★★	★★★★★★★
Protection against weld spatter	★	★★★★★★	★★★★★★★	★★★★★★★
Corrosion resistance	★	★★★★★★	★★★★★★	★★★★★★
Point load	★★★	★★★★	★★★★★★	★★★★★★★
Flatness in its new state	★★★★★★★	★★★★★★★	★★★★★★★	★★★★★★★
Maintenance of the flatness under heavy use	★	★★★	★★★★	★★★★★★
Life span	★★	★★★★	★★★★★★	★★★★★★
Siegmund welding tables and perforated plates	System 28 Basic 750	System 16 Basic 750 System 16 Professional 750 System 22 Professional 750 System 22 Perforated Plates System 28 Professional 750	System 16 Extreme 8.7 + Extreme 8.7 PLUS System 16 Perforated Plates System 22 Extreme 8.7 + Extreme 8.7 PLUS System 28 Basic 8.7 System 28 Extreme 8.7 System 28 Hexagon Slot Table System 28 Perforated Plates Premium Light Table side panel made of high quality steel S355J2+N + Plasma nitration	System 28 Extreme 8.8 PLUS Table side panel made of high quality steel S355J2+N + Plasma nitration

# Comparison of hardness

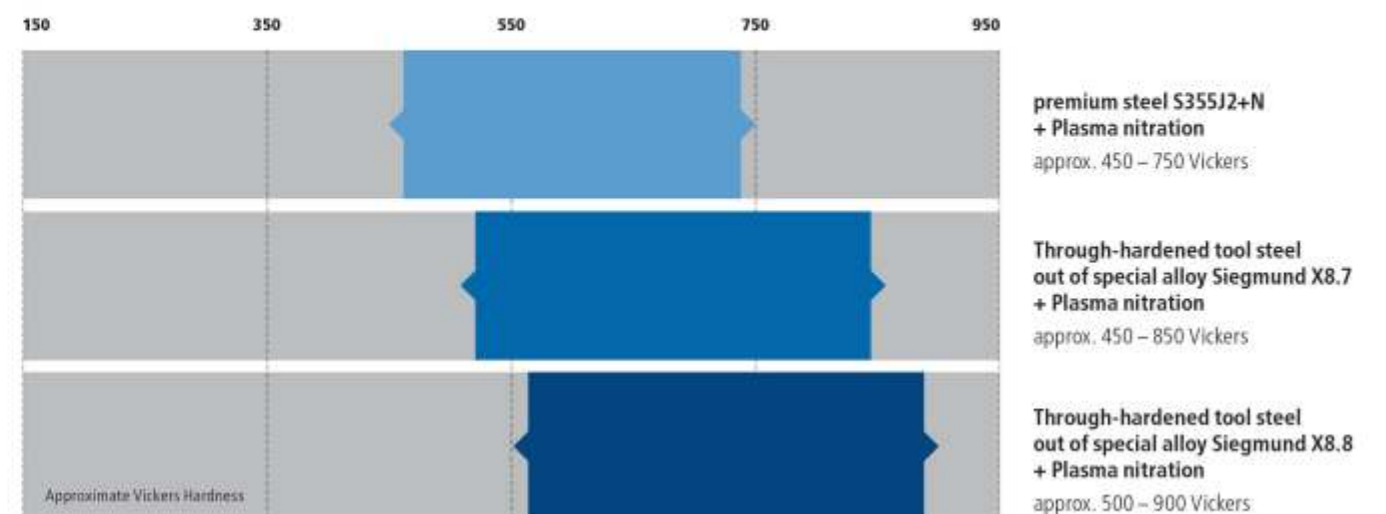
## Basic hardness

The high basic hardness is the essential hardness and allows a high impact resistance and a long service life of the welding table.



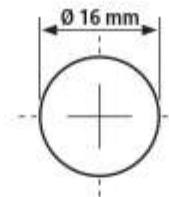
## Surface hardness

The plasma nitriding and subsequent BAR-coating protect against scratches, corrosion and welding spatter.



More information:  
[www.siegmund.com/F-plasma](http://www.siegmund.com/F-plasma)

For fine detail applications



### System 16 BASIC

#### Material

- **Basic 750:**  
premium steel S355J2+N + Plasma nitration
- Material thickness approx. 11,5 – 13 mm

#### Specifications

- Borehole Ø 16 mm
- Boreholes on the surface 50x50 mm grid
- Corners, edges and boreholes rounded
- Height of table side 50 mm
- Borehole spacing of table side 50 mm
- Construction reinforced with ribbing

### System 16 PROFESSIONAL 750

#### Material

- **Professional 750:**  
premium steel S355J2+N + Plasma nitration
- Material thickness approx. 11,5 – 13 mm

#### Specifications

- Borehole Ø 16 mm
- Boreholes on the surface 50x50 mm grid
- Corners, edges and boreholes rounded
- Height of table side 100 mm
- Borehole spacing of table side 25 mm
- With scaling on the surface
- Construction reinforced with ribbing

### System 16 EXTREME 8.7

#### Material

- **Professional Extreme 8.7:**  
Through-hardened tool steel X8.7 + Plasma nitration
- Material thickness approx. 11,5 – 13 mm
- Table side panel made of high quality steel S355J2+N + Plasma nitration

#### Specifications

- Borehole Ø 16 mm
- Boreholes on the surface 50x50 mm grid
- Corners, edges and boreholes rounded
- Height of table side 100 mm
- Boreholes on table sides in diagonal grid
- With scaling on the surface
- Construction reinforced with ribbing

### System 16 EXTREME 8.7 PLUS

#### Material

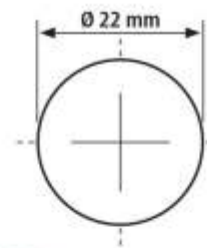
- **Professional Extreme 8.7 PLUS:**  
Through-hardened tool steel X8.7 + Plasma nitration
- Material thickness approx. 11,5 – 13 mm
- Table side panel made of high quality steel S355J2+N + Plasma nitration

#### Specifications

- Borehole Ø 16 mm
- Boreholes on the surface 50x50 mm grid
- Corners, edges and boreholes rounded
- Height of table side 150 mm
- Boreholes on table side 3 rows with 25 mm spacing,  
2 rows with 50 mm spacing
- With scaling on the surface
- Construction reinforced with ribbing



More stable than system 16, more cost-effective than system 28



➤ Your advantage with a Siegmund welding and clamping table:

- Short set-up time / Time efficient
- Rapid tooling changes
- No welding distortion
- 100% repeatability
- Easy clamping in every spot
- Significantly less rework
- Highly resilient
- Same basis for every project
- Low error rate

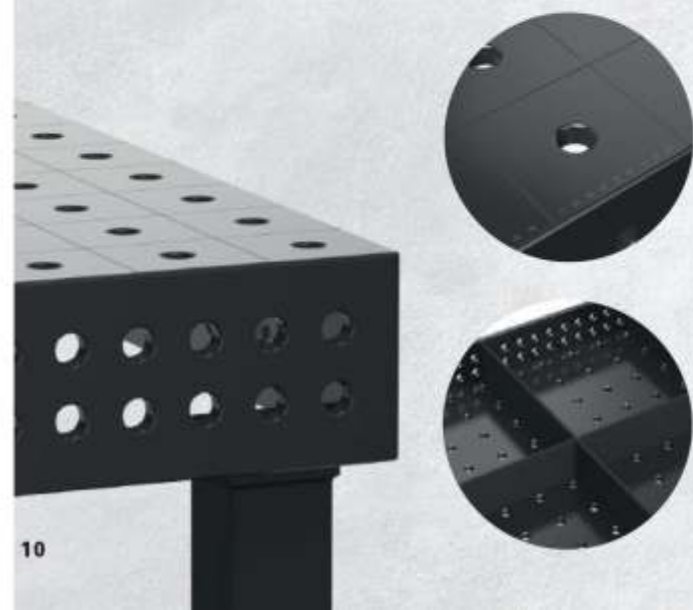
### System 22 PROFESSIONAL 750

#### Material

- Professional 750: premium steel S355J2+N + Plasma nitration
- Material thickness approx. 17 – 19 mm

#### Specifications

- Borehole Ø 22 mm
- Boreholes on the surface 100x100 mm grid
- Corners, edges and boreholes rounded
- Height of table side 150 mm
- Borehole spacing of table side 50 mm
- With scaling on the surface
- Construction reinforced with ribbing



### System 22 EXTREME 8.7

#### Material

- Professional Extreme 8.7: Through-hardened tool steel X8.7 + Plasma nitration
- Material thickness approx. 17 – 19 mm
- Table side panel made of high quality steel S355J2+N + Plasma nitration

#### Specifications

- Borehole Ø 22 mm
- Boreholes on the surface in diagonal grid
- Corners, edges and boreholes rounded
- Height of table side 150 mm
- Borehole spacing of table side 50 mm
- With scaling on the surface
- Construction reinforced with ribbing



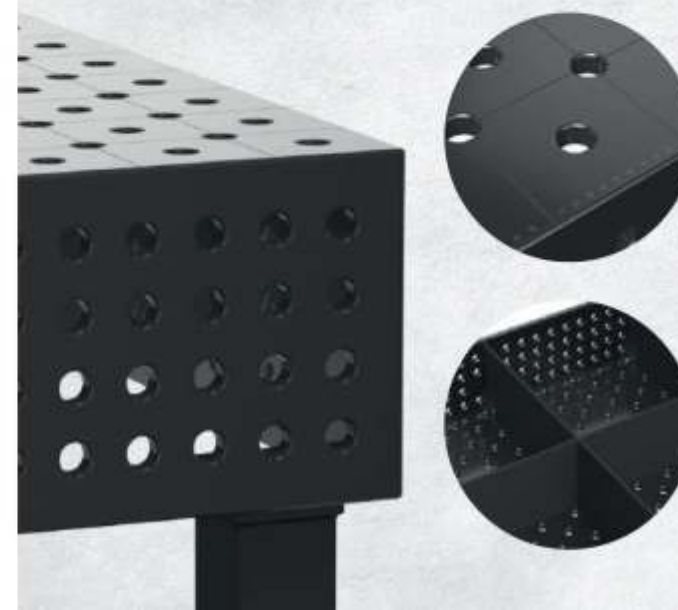
### System 22 EXTREME 8.7 PLUS

#### Material

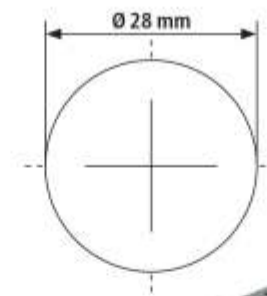
- Professional Extreme 8.7 PLUS: Through-hardened tool steel X8.7 + Plasma nitration
- Material thickness approx. 17 – 19 mm
- Table side panel made of high quality steel S355J2+N + Plasma nitration

#### Specifications

- Borehole Ø 22 mm
- Boreholes on the surface in diagonal grid
- Corners, edges and boreholes rounded
- Height of table side 250 mm
- Boreholes on table side 4 rows with 50 mm spacing
- With scaling on the surface
- Construction reinforced with ribbing



For heavy duty applications



Our bestsellers Professional Extreme 8.7 and 8.8:  
Exceptional hardness and a long service life



### System 28 BASIC

#### Material

- **Basic 750:**  
premium steel S355J2+N
- **Basic 8.7:**  
Through-hardened tool steel X8.7 + Plasma nitration
- Material thickness approx. 24,5 – 27 mm

#### Specifications

- **Borehole Ø 28 mm**
- **Basic 750:** Boreholes on the surface 100x100 mm grid
- **Basic 8.7:** Boreholes on the surface in diagonal grid
- Rounded corners and edges
- M12-thread on 4 sides every 200 mm
- 8x45° chamfer for table mounting



### System 28 PROFESSIONAL 750

#### Material

- **Professional 750:**  
premium steel S355J2+N + Plasma nitration
- Material thickness approx. 24,5 – 27 mm

#### Specifications

- **Borehole Ø 28 mm**
- Boreholes on the surface 100x100 mm grid
- Corners, edges and boreholes rounded
- Height of table side 200 mm
- Borehole spacing of table side 50 mm
- With scaling on the surface
- Construction reinforced with ribbing



### System 28 EXTREME 8.7

#### Material

- **Professional Extreme 8.7:**  
Through-hardened tool steel X8.7 + Plasma nitration
- Material thickness approx. 24,5 – 27 mm
- Table side panel made of high quality steel S355J2+N + Plasma nitration

#### Specifications

- **Borehole Ø 28 mm**
- Boreholes on the surface in diagonal grid
- Corners, edges and boreholes rounded
- Height of table side 200 mm
- Boreholes on table sides in diagonal grid
- With scaling on the surface
- Construction reinforced with ribbing



### System 28 EXTREME 8.8 PLUS

#### Material

- **Professional Extreme 8.8 PLUS:**  
Through-hardened tool steel X8.8 + Plasma nitration
- Material thickness approx. 24,5 – 27 mm
- Table side panel made of high quality steel S355J2+N + Plasma nitration

#### Specifications

- **Borehole Ø 28 mm**
- Boreholes on the surface in diagonal grid
- Corners, edges and boreholes rounded
- Height of table side 300 mm
- Boreholes on table side 3 rows with 50 mm spacing,  
2 rows with 100 mm spacing
- With scaling on the surface
- Construction reinforced with ribbing



### Rotating table height adjustable

Ergonomic working in a small space:

- 360° handling
- Quick and easy adjustment for an ideal working height



More Information:  
[www.siegmund.com/F-rotating](http://www.siegmund.com/F-rotating)



### Siegmund Workstation

When working with wood or metals the Workstation offers maximum versatility to expand all ideas and projects.



More Information:  
[www.siegmund.com/F-work](http://www.siegmund.com/F-work)



### Aluminum profiles

Low cost, lightweight, large component clamping tools! Move large components without a crane or forklift.



More Information:  
[www.siegmund.com/F-profile](http://www.siegmund.com/F-profile)



### Mobile lifting table

With the latest lifting table Siegmund set new standards for flexible ergonomic working and application versatility.



More Information:  
[www.siegmund.com/F-lifting](http://www.siegmund.com/F-lifting)



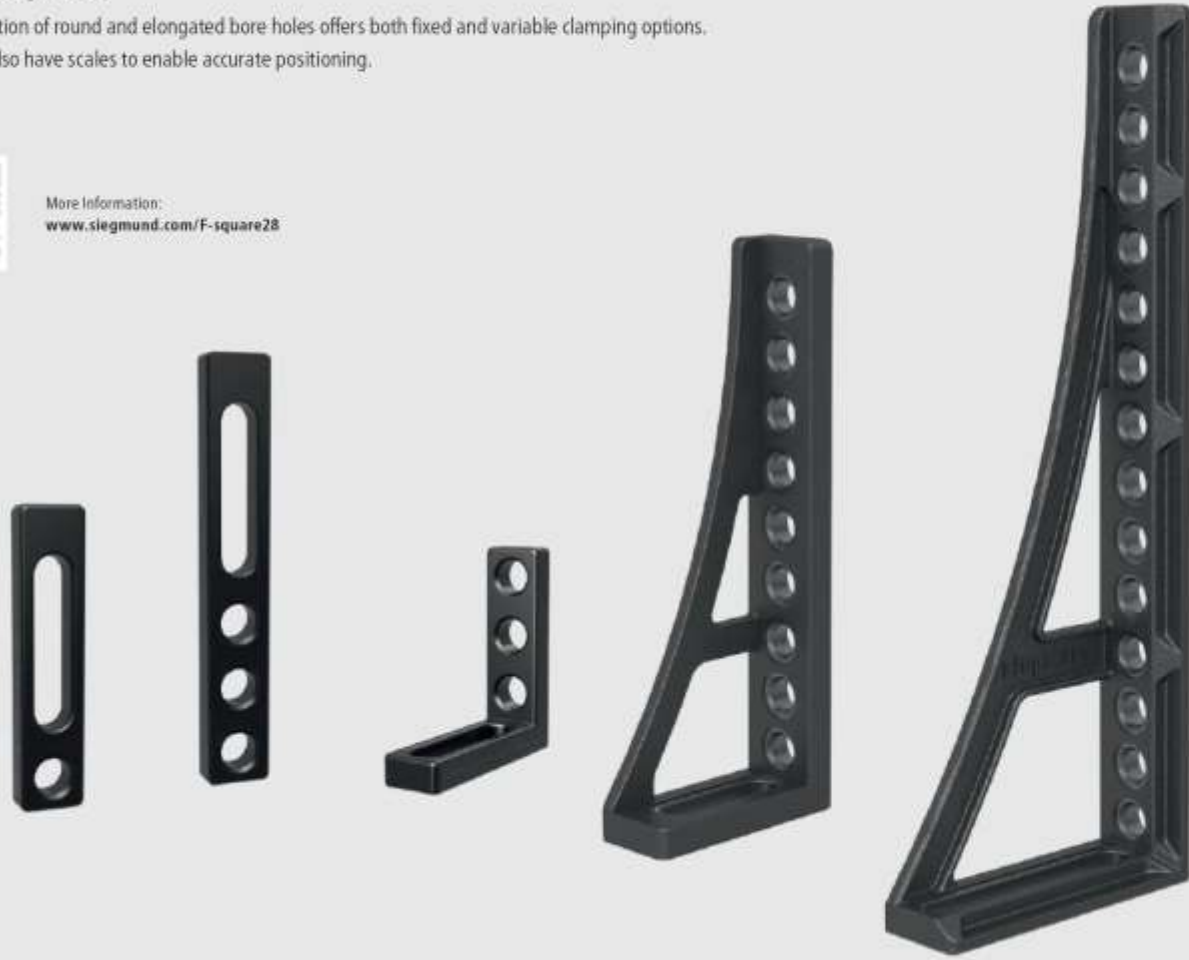


## Stops & Squares

The combination of round and elongated bore holes offers both fixed and variable clamping options. Many tools also have scales to enable accurate positioning.



More Information:  
[www.siegmund.com/F-square28](http://www.siegmund.com/F-square28)



## Clamps

Whether classic clamps or fast clamping versions – Siegmund offers the right clamping elements for every project. Choose from different sizes, types and handles.



More Information:  
[www.siegmund.com/F-clamp28](http://www.siegmund.com/F-clamp28)



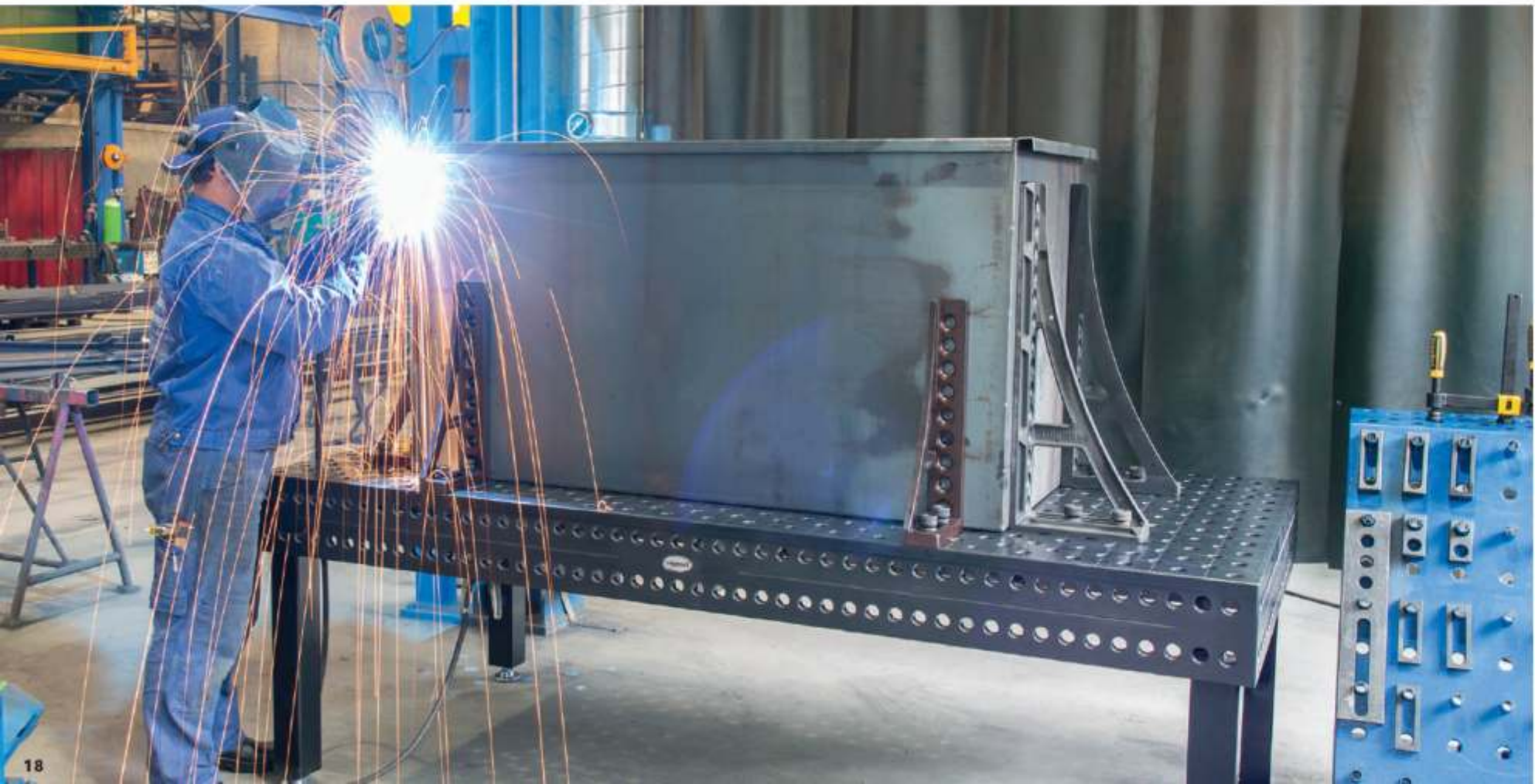
## Bolts

Our bolts are made of hardened high-alloy steel for maximum strength. Choose from a wide range of fast clamping bolts, connecting bolts and much more.



More Information:  
[www.siegmund.com/F-bolt28](http://www.siegmund.com/F-bolt28)





# siegmund



## PRODUCER:

**Bernd Siegmund GmbH**  
Landsberger Str. 180  
86507 Oberottmarshausen  
Germany (Bavaria)  
Phone +49 (0) 8203 9607-0  
Fax +49 (0) 8203 9607-33  
E-Mail: [sales@siegmund.com](mailto:sales@siegmund.com)  
[www.siegmund.com](http://www.siegmund.com)

## YOUR DISTRIBUTOR:



**HYTEK MARKETING**  
503, Marigold, Neco Gardens,  
Vimannagar, Pune 411014, INDIA  
Tel: +91 20 40036056 / 229 / 48600290  
Email: [hytek@hytekmarketing.biz](mailto:hytek@hytekmarketing.biz)  
[www.hytekmarketing.biz](http://www.hytekmarketing.biz)  
GSTIN: 27AFQPK8682R1Z4

**HYTEK MARKETING**  
5A, Plot No 491, Sy. No. 45,  
Phase IV, Peenya Industrial Area  
Bangalore - 560058  
Tel: +91 80 41306055,  
+91 80 41305955  
GSTIN: 29AFQPK8682R1Z0

Technical data are subject to change. Resale reserved. Our terms and conditions of sale strictly apply. Subject to price changes and printing errors.

All texts, pictures and design elements are copyrighted by the Bernd Siegmund GmbH. No part of this flyer may be edited analogously or digital or in another mode, may be duplicated or published out of the flyer without written approval of the legal owner. Offences are prosecuted. © 2023 Bernd Siegmund GmbH